

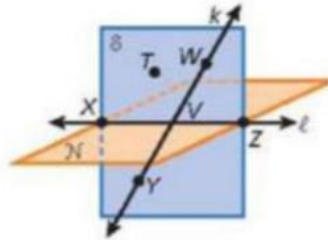
1.3 HOMEWORK  
PAGE 35 #'S 1-3, 6-8, 12, 14

Draw and label each of the following.

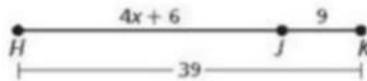
1. a segment with endpoints  $X$  and  $Y$
2. a ray with endpoint  $M$  that passes through  $P$
3. three coplanar lines intersecting at a point

Use the figure to name each of the following.

5. three coplanar points
6. two lines
7. a plane containing  $T$ ,  $V$ , and  $X$
8. a line containing  $V$  and  $Z$



12. The diagram represents a straight highway with three towns, Henri, Joaquin, and Kenard. Find the distance from Henri  $H$  to Joaquin  $J$ .



14.  $Q$  is the midpoint of  $\overline{PR}$ ,  $PQ = 2z$ , and  $PR = 8z - 12$ . Find  $z$ ,  $PQ$ , and  $PR$ .