

1.3 HOMEWORK
PAGE 35 #'S 1-3, 6-8, 12, 14

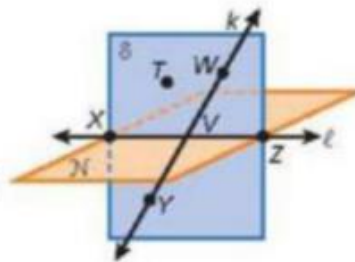
Draw and label each of the following.

1. a segment with endpoints X and Y
2. a ray with endpoint M that passes through P
3. three coplanar lines intersecting at a point

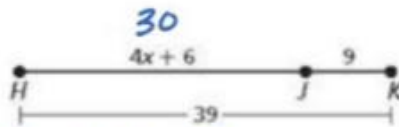


Use the figure to name each of the following.

5. three coplanar points
6. two lines \overleftrightarrow{WY} and \overleftrightarrow{XZ}
7. a plane containing T , V , and X plane TVX
8. a line containing V and Z \overleftrightarrow{VZ}



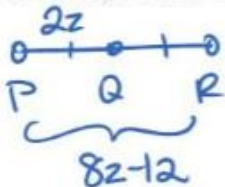
12. The diagram represents a straight highway with three towns, Henri, Joaquin, and Kenard. Find the distance from Henri H to Joaquin J .



$$\begin{aligned}
 4x + 6 + 9 &= 39 \\
 4x + 15 &= 39 \\
 4x &= 24 \\
 x &= 6
 \end{aligned}$$

$$\begin{aligned}
 \overline{HJ} &= 30 \\
 \overline{JK} &= 9 \\
 \overline{HK} &= 39
 \end{aligned}$$

14. Q is the midpoint of \overline{PR} , $PQ = 2z$, and $PR = 8z - 12$. Find z , PQ , and PR .



$$\begin{aligned}
 2(2z) &= 8z - 12 \\
 4z &= 8z - 12 \\
 -4z &= -12 \\
 \boxed{z} &= \boxed{3}
 \end{aligned}$$

$$\begin{aligned}
 \overline{PQ} &= 2(3) \\
 &= \boxed{6} \\
 \overline{PR} &= 8(3) - 12 \\
 &= \boxed{12}
 \end{aligned}$$