

# UNIT 3 DAY 19 NOTES

## Hello... It's me... The Graphing Calculator!! →



Do you know...

1. How to change a decimal to a fraction
2. Show your partner the difference between the minus button and the negative button.
3. Show your partner where to find the square root button

NEW STUFF: Getting table values quickly by the graphing calculator

Our Equation:  $y - 2x = 1$

**Step 1:** Solve the equation for  $y$ .

**Step 2:** Press the  button

**Step 3:** Enter your equation in . Use the  button for your variable. 

**Step 4:** Next, press  . This is how you access:   
(note: any time you hit the blue button, it activates the blue words ☺)

My screen looks like this:  
Yours may not.

X	Y1
0	1
1	3
2	5
3	7

These are your ordered pairs!

If the table of values starts someplace strange, you can change that on this screen:

Use   to access 

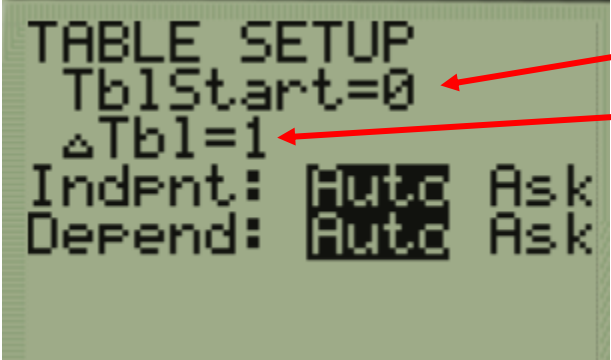


TABLE SETUP  
TblStart=0  
 $\Delta$ Tbl=1  
Indent: Auto Ask  
Depend: Auto Ask

Where the table starts  
How much it counts by  
Leave these alone

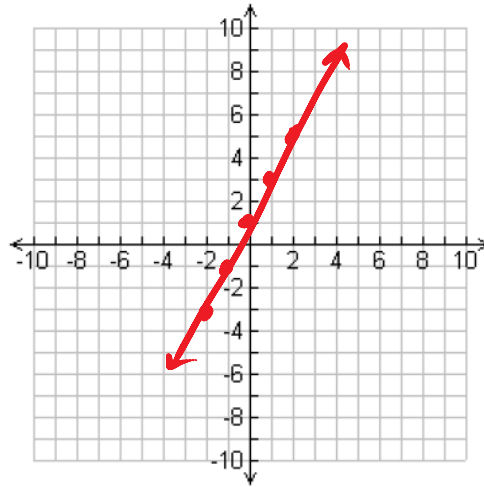
Flip to the back to graph ☺

Graph the equation you JUST plugged into your calculator using the table values shown:

Our Equation:  $y - 2x = 1$

$$y = 2x + 1$$

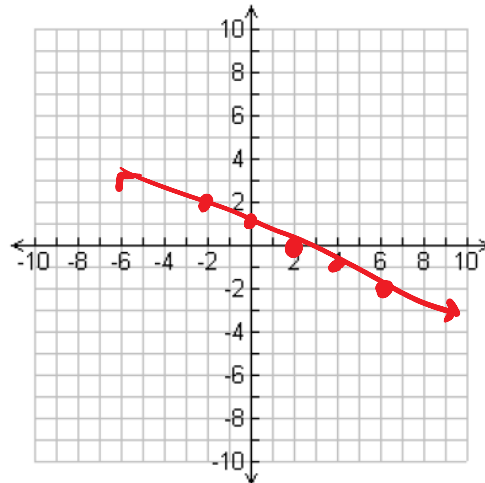
x	y
-2	-3
-1	-1
0	1
1	3
2	5



Try it one more time with your partner!

$$y = \frac{-1}{2}x + 1$$

x	y
-2	2
0	1
2	0
4	-1
6	-2



Now give your partner a high five!!

