

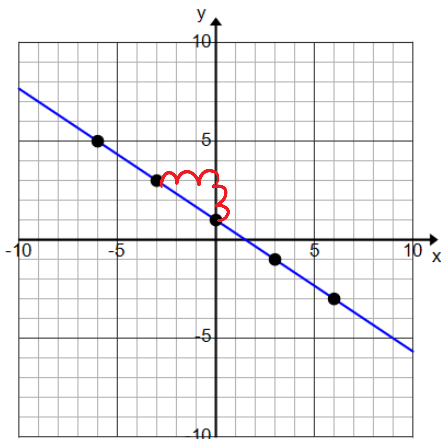
Unit 3 Day 19

Homework Graphing by Tables

Key

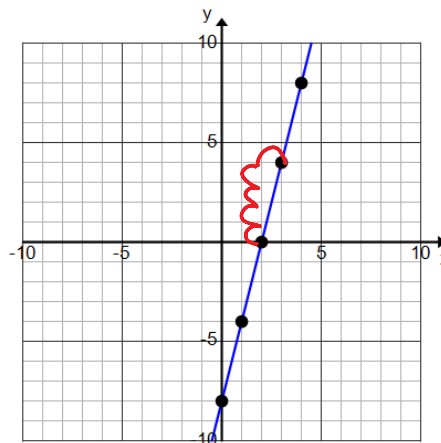
REVIEW from LAST WEEK: Find the slope of the line given the graph.

1.



Slope (m) = $\frac{-2}{3}$

2.



Slope (m) = $\frac{4}{1} = 4$

#3-4: Graph the following equations. Make sure to solve for y first!

3. $y - 5x = 7$

$$\begin{array}{r} +5x \quad +5x \\ \hline y = 5x + 7 \end{array}$$

x	y
-2	-3
-1	2
0	7
1	12
2	17

$x = -2: y = 5(-2) + 7$
 $= -10 + 7$

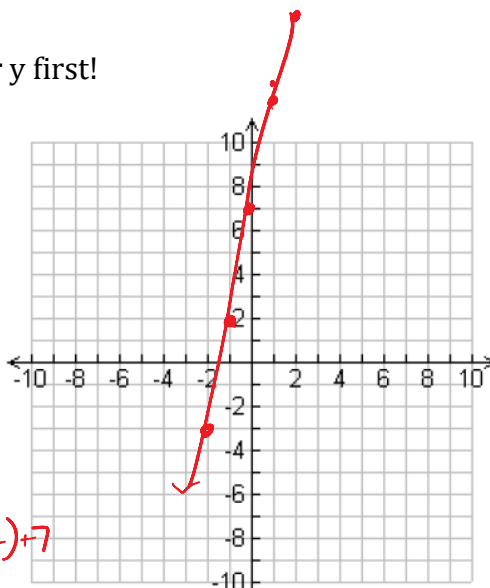
$y = -3$

$x = -1: y = 5(-1) + 7$
 $y = -5 + 7$
 $y = 2$

$x = 0: y = 5(0) + 7$
 $y = 7$

$x = 1: y = 5(1) + 7$
 $= 5 + 7$
 $y = 12$

$x = 2: y = 5(2) + 7$
 $y = 10 + 7$
 $y = 17$



4. $-2x + 2y = 12$

$$\frac{2y}{2} = \frac{2x+12}{2} \rightarrow \boxed{y = x + 6}$$

x	y
-2	4
-1	5
0	6
1	7
2	8

$x = -2: y = -2 + 6$
 $y = 4$

$x = -1: y = -1 + 6$
 $y = 5$

$x = 0: y = 0 + 6$
 $y = 6$

$x = 1: y = 1 + 6$
 $y = 7$

$x = 2: y = 2 + 6$
 $y = 8$

