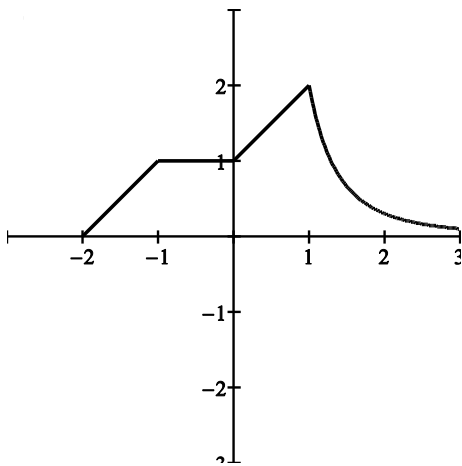


Key

UNIT 3 DAY 6 - NOTES

1. Use the graphs below to evaluate the functions:

$y = a(x)$

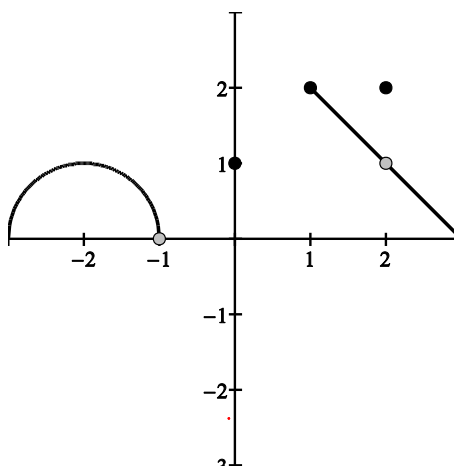


- 1. $a(0) = 1$
- 2. $a(1) = 2$

3. Find x when $a(x) = 2$

$x = 1$

$y = b(x)$



- 1. $b(0) = 1$
- 2. $b(2) = 2$

3. Find x when $b(x) = 2$

$x = 1$ $x = 2$

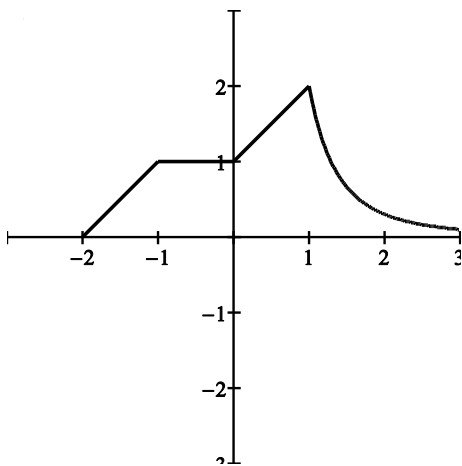
What three mistakes might a student make when evaluating a function using function notation?

Key

UNIT 3 DAY 6 - NOTES

1. Use the graphs below to evaluate the functions:

$y = a(x)$

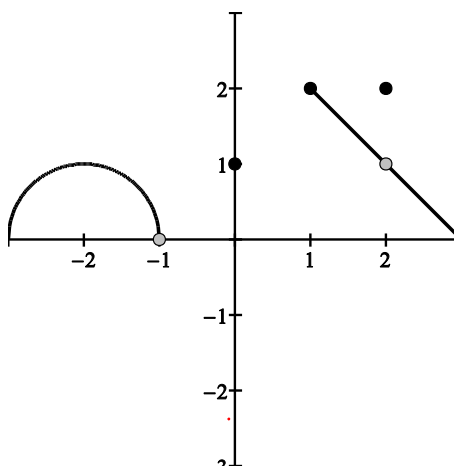


- 2. $a(0) = 1$
- 2. $a(1) = 2$

3. Find x when $a(x) = 2$

$x = 1$

$y = b(x)$



- 1. $b(0) = 1$
- 2. $b(2) = 2$

3. Find x when $b(x) = 2$

$x = 1$ $x = 2$

What three mistakes might a student make when evaluating a function using function notation?