

Name: **Key**

UNIT 4 DAY 13  
GROUP WORK

GROUP 1 MEMBERS: \_\_\_\_\_

Write an equation in standard form that passes through the points.

1. (-2, 7) and (2, 15)

$$m = \frac{15-7}{2-(-2)} = \frac{8}{4} = 2$$

$$y-7 = 2(x+2)$$

$$y-7 = 2x+4$$

$$y = 2x+11$$

$$\boxed{-2x+y=11}$$

2. x-intercept of -5 and y-intercept of 2

$$(-5,0) \quad (0,2)$$

$$m = \frac{2-0}{0-(-5)} = \frac{2}{5}$$

$$5(y - \frac{2}{5}x) + (2)5$$

$$5y = 2x + 10$$

$$\boxed{-2x+5y=10}$$

Self-Assessment: How did you do?

1  
Easy Peasy

2

3  
Ah... Okay

4

5  
I could do it in my sleep.

GROUP 2 MEMBERS: \_\_\_\_\_

Convert the standard form equations to slope-intercept form.

3.  $-3x + 5y = 10$

$$\frac{5y}{5} = \frac{3x+10}{5}$$

$$y = \frac{3}{5}x + 2$$

4.  $6x - 2y = 12$

$$-2y = -6x + 12$$

$$y = 3x - 6$$

Self-Assessment: How did you do?

1  
Easy Peasy

2

3  
Ah... Okay

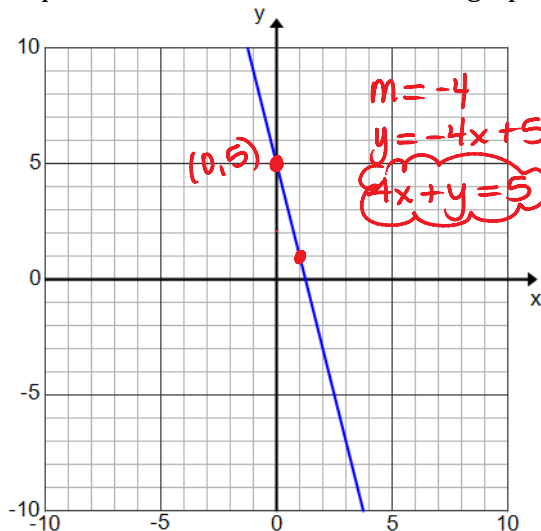
4

5  
I could do it in my sleep.

GROUP 3 MEMBERS: \_\_\_\_\_

Write an equation in standard form from the graph.

5.



6.

