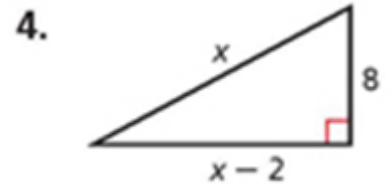
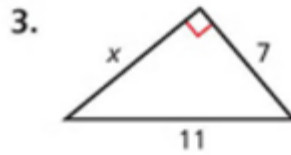
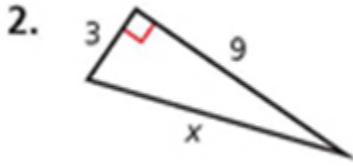


Day 1 Homework - Page 364 #2-4, 9, 10, 16, 23, 30, 32, 38, 40, 51

Find the value of x . Give your answer in simplest radical form.

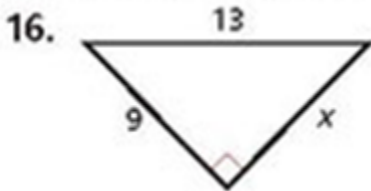


Tell if the measures can be the side lengths of a triangle. If so, classify the triangle as acute, obtuse, or right.

9. 7, 10, 12

10. 9, 11, 15

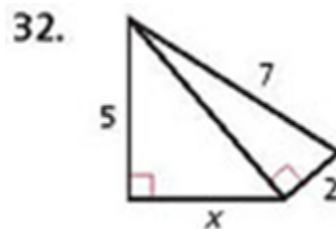
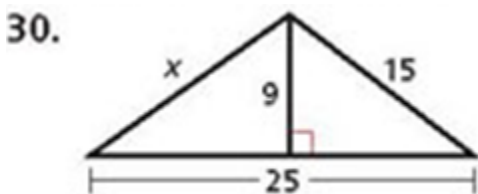
Find the value of x . Give your answer in simplest radical form.



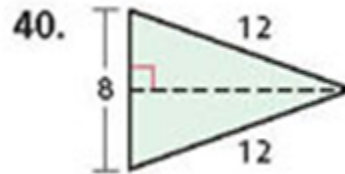
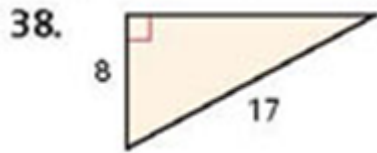
Tell if the measures can be the side lengths of a triangle. If so, classify the triangle as acute, obtuse, or right.

23. 8, 13, 23

Find the value of x . Give your answer in simplest radical form.



Find the perimeter and the area of each figure. Give your answer in simplest radical form.



51. **Extended Response** The figure shows the first six triangles in a pattern of triangles.
- Find PA , PB , PC , PD , PE , and PF in simplest radical form.
 - If the pattern continues, what would be the length of the hypotenuse of the ninth triangle? Explain your answer.
 - Write a rule for finding the length of the hypotenuse of the n th triangle in the pattern. Explain your answer.

