

Unit 3 Day 20 Study Guide for Unit 3 Test



PART I: FUNCTIONS Use $f(x) = 8x - 12$, $m(x) = x^2 + 2x$, and $j(x) = |3 - x|$ to answer the questions below.

1. $f(-3) =$ 2. $j(10) =$ 3. $m(-1) =$ 4. Find x when $f(x) = -2$

PART II: FUNCTIONS FROM GRAPHS Use the table below to evaluate the following:

x	$f(x)$	$g(x)$	$h(x)$
-4	15	-3	5
-3	10	-1	3
-2	7	-3	1
6	-3	-5	-1

5. $f(-3) =$ 6. $g(-2) =$

7. Find x when $f(x) = -3$

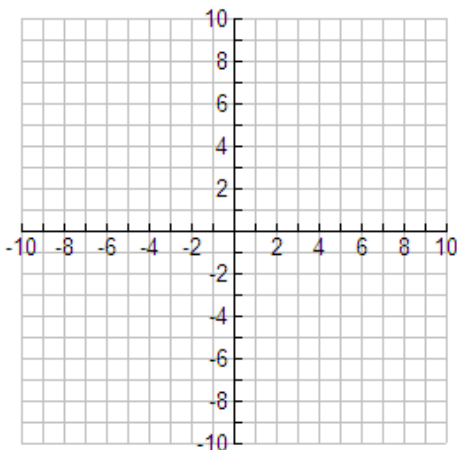
PART III: GRAPHING FUNCTIONS Graph the function using a table.

PART IV: Is it a function?

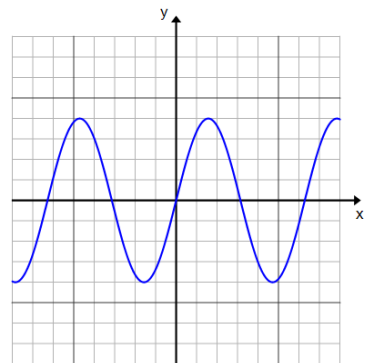
8. $f(x)$: double the input and then add 1

Function: $f(x) =$

x	$f(x)$
-2	
-1	
0	
1	
2	



- 9.



Circle one: YES or NO

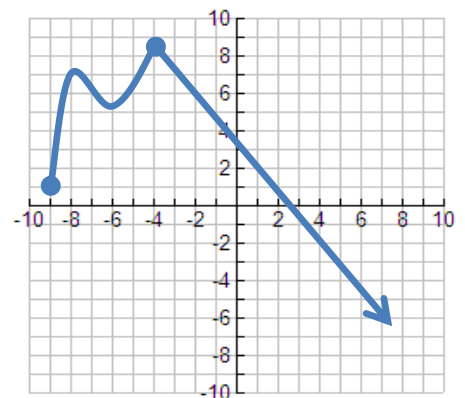
Explain:

PART V: READING GRAPHS Use the graph of $f(x)$ to the right to evaluate.

10. $f(-4) =$ _____

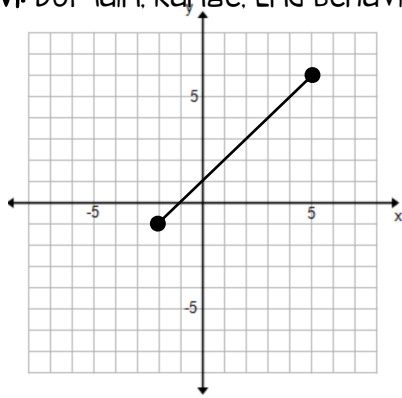
11. Find x when $f(x) = 1$

$x =$ _____



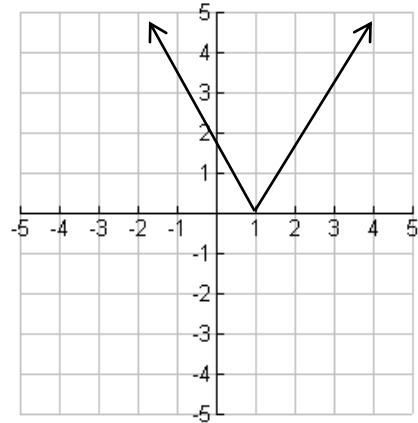
PART VI: DOMAIN, RANGE, END BEHAVIOR.

12.



Domain : _____
 Range: _____
 Function: YES or NO

13.



Domain : _____ As $x \rightarrow -\infty, y \rightarrow$ _____
 Range: _____ As $x \rightarrow \infty, y \rightarrow$ _____
 Function: YES or NO

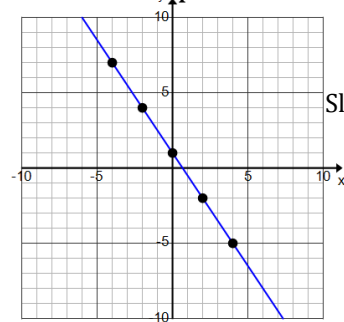
PART VII: SLOPE

14-15: Find the slope of the line that passes through the two points.

14. (2, -3) and (-1, -3)

15. (1, 2) and (5, -2)

16. Find the slope of the line given the graph.



Slope (m) = _____

PART VIII: GRAPHING LINES BY TABLES.

17. Which ordered pair is a solution of $2y - 3x = -13$

a. (-3, 2)

b. (-2, 3)

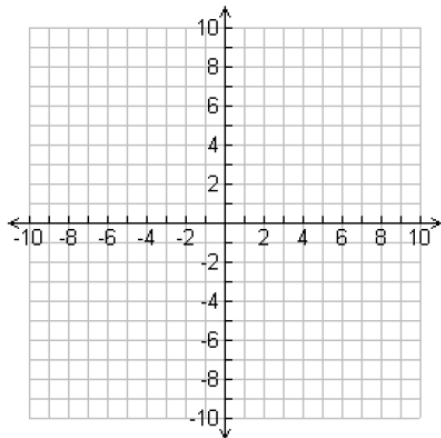
c. (5, 0)

d. (3, -2)

18-19. Graph using tables. Don't forget to solve for y first.

18. $y - 3x = -1$

x	y
-2	
-1	
0	
1	
2	



19. $-6x - 3y = -18$

x	y
-2	
-1	
0	
1	
2	

