

Unit 5 Part II: Day 23 Homework

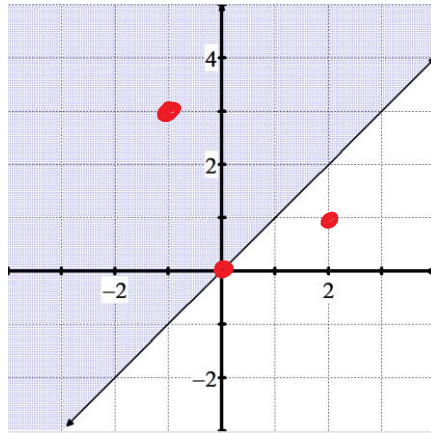
Pg. 271) #12-14, 19-22, 25-27

Tell whether the ordered pair is a solution to the inequality.

12) $(-1, 3)$ *yes*

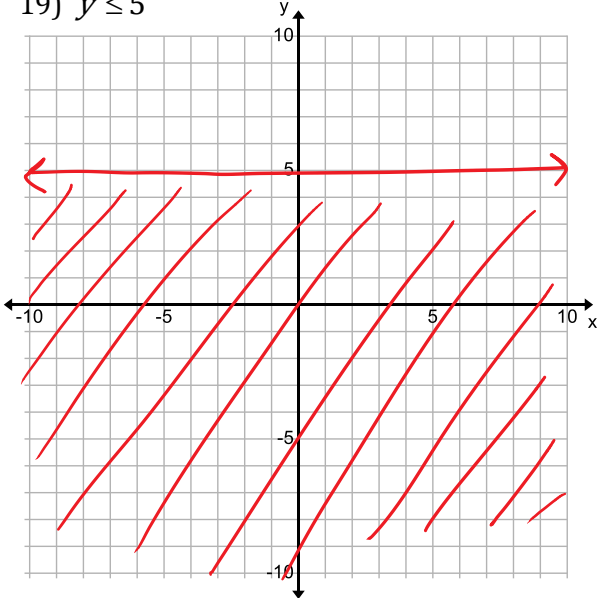
14) $(0, 0)$ *yes*

16) $(2, 1)$ *no*

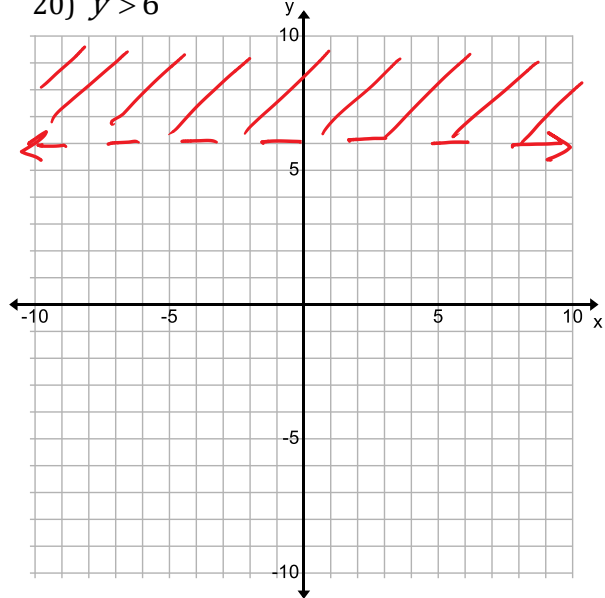


Graph the inequality in a coordinate plane

19) $y \leq 5$

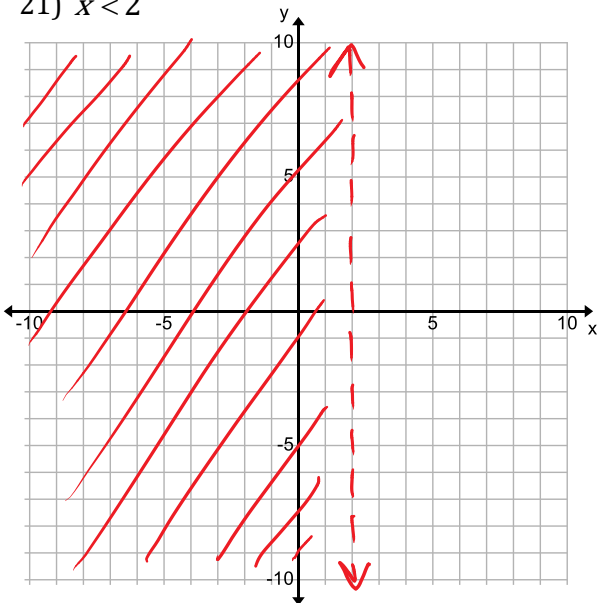


20) $y > 6$

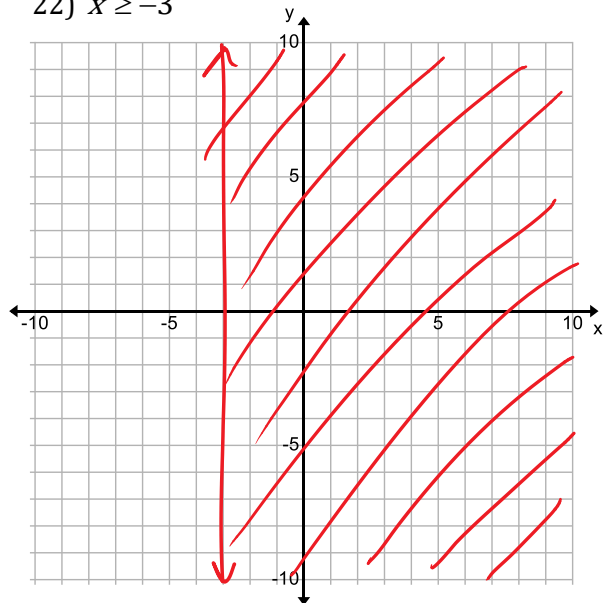


Graph the inequality in a coordinate plane

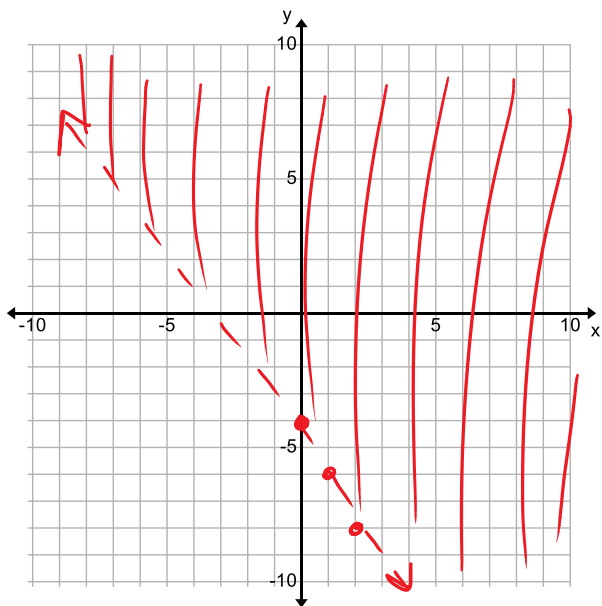
21) $x < 2$



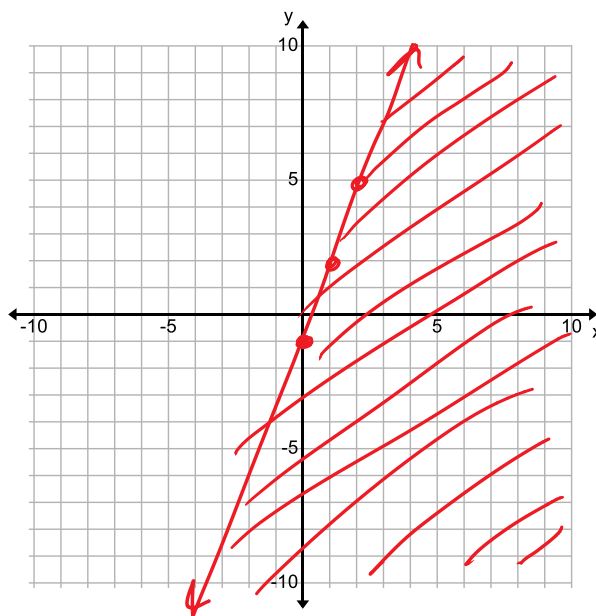
22) $x \geq -3$



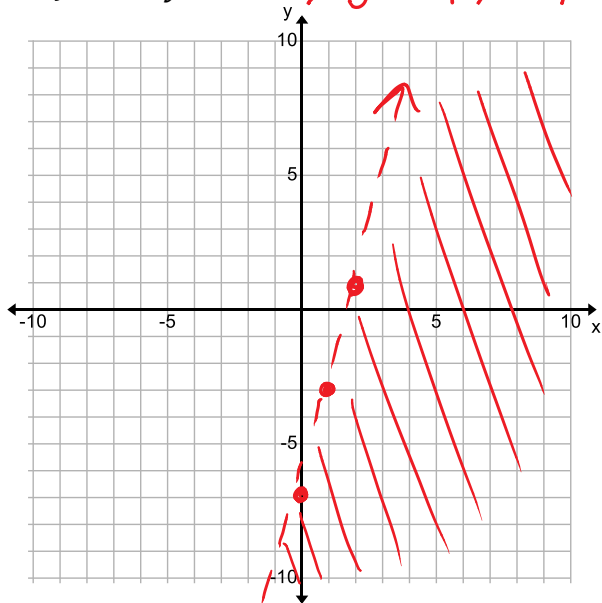
25) $y > -2x - 4$ $m = -2$ $b = -4$



26) $y \leq 3x - 1$ $m = 3$ $b = -1$



27) $-4x + y < -7 \Rightarrow y < 4x - 7$



$m = 4$
 $b = -7$

